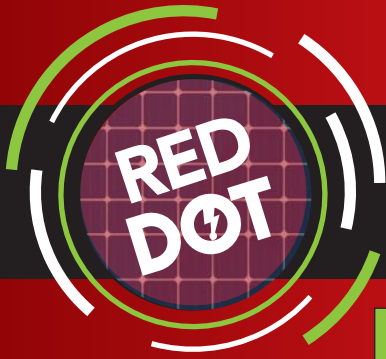
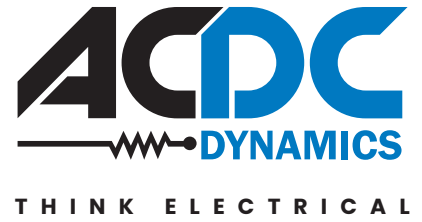


BTC PRICING



# SOLAR PANEL

## PROMOTION



Only pallet QTYs to be delivered, alternatively collection.  
LIMITED QTYs PER BRANCH. ONLY WHILE STOCKS LAST

Trina solar

545W **R4.89/W**

T1-SLP-110-545-M-TRINA

31 Panels / Pallet

425W **R5.00/W**

T1-SLP-144-425-TRINA

36 Panels / Pallet

550W **R2.75/W**

T1-SLP-144-550-M-TRINA

36 Panels / Pallet

550W **R4.34/W**

T1-SLP-110-550-M-TRINA

31 Panels / Pallet

575W **R2.64/W**

T1-SLP-144-575-M-TRINA

31 Panels / Pallet

660W **R3.20/W**

T1-SLP-132-660-M-TRINA

33 Panels / Pallet



**BLACK PANEL**

525W **R5.05/W**

T1-SLP-144-425-BK-TRINA

36 Panels / Pallet

 **ASTRONERGY**

545W **R2.64/W**

T1-SLP-144-545-M-AST

31 Panels / Pallet



460W **R2.60/W**

T1-SLP-144-550-M-AST

JA SOLAR

595W **R3.33/W**

T1-SLP-156-595-M-JA

31 Panels / Pallet

550W **R2.64/W**

T1-SLP-144-550-M-JA

36 Panels / Pallet

595W **R2.62/W**

T1-SLP-156-590-BIP-JA

31 Panels / Pallet

550W **R2.64/W**

T1-SLP-144-550-M-SP

31 Panels / Pallet

 **risen**

540W **R2.64/W**

T1-SLP-144-540-M-RIS

31 Panels / Pallet

550W **R2.64/W**

T1-SLP-144-550-M-RIS

31 Panels / Pallet

580W **R2.99/W**

T1-SLP-144-580-NTP-RIS

31 Panels / Pallet

600W **R3.33/W**

T1-SLP-120-600-M-RIS

31 Panels / Pallet

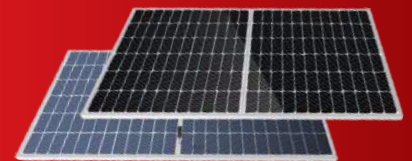


*Solar*  
**Jinko**

555W **R2.64/W**

T1-SLP-144-555-M-JINKO

31 Panels / Pallet



 Solar Hotline: **010 045 8002**

 [solar@acdc.co.za](mailto:solar@acdc.co.za)

NATIONAL SALES CENTRE: **010 202 3400** | TECHNICAL CENTRE: **010 202 3500**

HEAD OFFICE - LONGMEADOW - 010 202 3300 - 26 Nguni Drive, Longmeadow Estate West, Edenvale, Gauteng  
Germiston 011 418 9600 | Richmond Park 021 492 2000 | Riverhorse 031 492 4800 | Pinetown 031 700 4215

